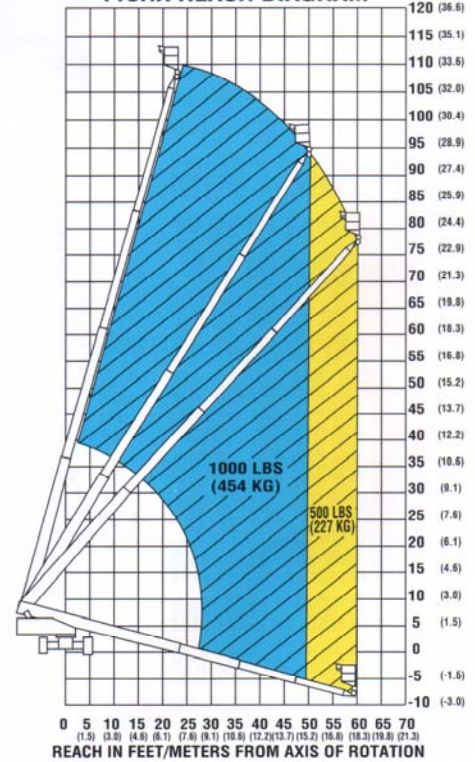


# MACHINE SPECIFICATIONS

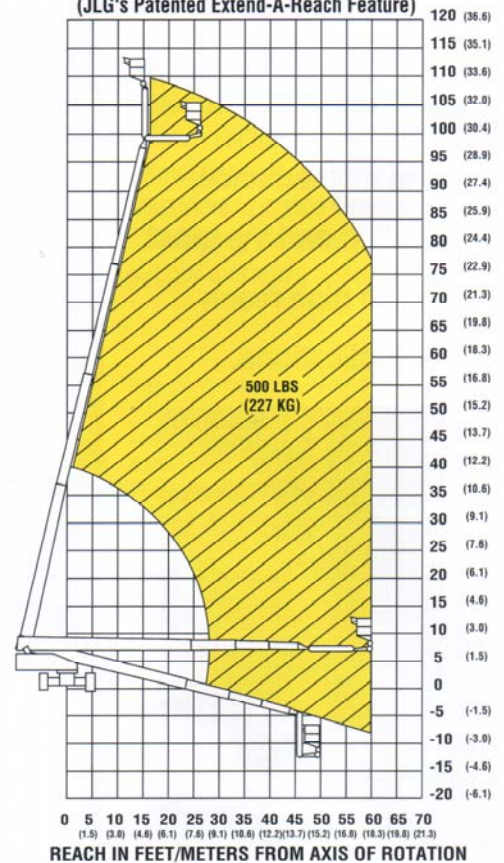
DIMENSIONS	110HX	100HX
PLATFORM HEIGHT	110 ft. 33.54m	100 ft. 30.49m
WORKING HEIGHT	116 ft. 35.37m	106 ft. 32.32m
PLATFORM DIMENSIONS-STD.	36" x 96" x 44" .91m x 2.44m x 1.11m	36" x 96" x 44" .91m x 2.44m x 1.11m
PLATFORM CAPACITY (restricted)	1000 lbs. (454 kg.)	1000 lbs. (454 kg.)
PLATFORM CAPACITY (unrestricted)	500 lbs. (227 kg.)	500 lbs. (227 kg.)
STOWED LENGTH	38 ft., 7 in. 11.80m	36 ft., 2 in. 11.00m
STOWED HEIGHT	9 ft., 10 in. 3.00m	9 ft., 10 in. 3.00m
WIDTH (axles retracted)	8 ft. 6 in. (2.59m)	8 ft. 6 in. (2.59m)
WIDTH (axles extended)	10 ft. 10 in. (3.30m)	10 ft. 10 in. (3.30m)
TAILSWING (axles retracted)	48 in. (1.22m)	48 in. (1.22m)
TAILSWING (axles extended)	34 in. (.86 m)	34 in. (.86 m)
GROSS WEIGHT (approx)	(1) 40,500 lbs. 18371 kg.	(1) 37,000 lbs. 16783 kg.
ENGINE (gas)	63 HP @ 2800 rpm	63 HP @ 2800 rpm
ENGINE (diesel)	76 HP @ 2400 rpm	76 HP @ 2400 rpm
MAIN PUMP OUTPUT	39 gpm @ 2800 rpm 147.6 L/min.	39 gpm @ 2800 rpm 147.6 L/min.
AUXILIARY PUMP OUTPUT	4.75 gpm 18 L/min.	4.75 gpm 18 L/min.
HYDRAULIC TANK CAPACITY	55 U.S.	55 U.S.
FUEL TANK CAPACITY	26 U.S. gals. 98.4 L	26 U.S. gals. 98.4 L
TRAVEL SPEED	2.8 mph 4.5 km/hr	2.8 mph 4.5 km/hr
GRADEABILITY	20% on hard surface	20% on hard surface
TURNING RADIUS (axles retracted)	22 ft., 10 in. (9.96m)	22 ft., 10 in. (6.96m)
TURNING RADIUS (outside)	24ft., 0 in. (7.32 m)	24 ft., 0 in. (7.32 m)
HORIZONTAL REACH	60 ft. 0 in. 18.29m	60 ft. 0 in. 18.29m
TIRES (Foam Filled)	15 x 22.5	15 x 22.5
WHEELBASE	132 in. 3.35m	132 in. 3.35m
GROUND CLEARANCE	11 in. 29.7cm	11 in. 29.7cm

(1)GVW may increase to meet country standards or with the addition of optional equipment

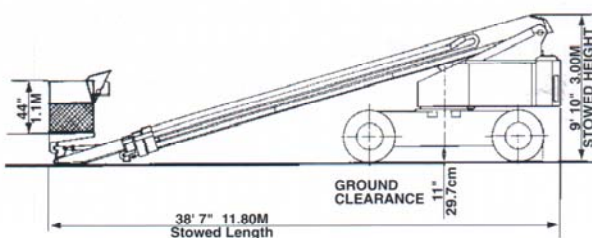
### 110HX REACH DIAGRAM



### 100HX+10 REACH DIAGRAM (JLG's Patented Extend-A-Reach Feature)



### 110HX SHOWN



### PLATFORM DIMENSIONS

